



# VILLAGEOUTDOORS

TURF & LANDSCAPE SUPPLY



**01**  
**TURF & PLANT  
HEALTH**  
PG. 3-7



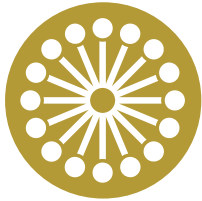
**07**  
**SPORTS FIELDS**  
PG. 34-35



**02**  
**SEED ESTABLISHMENT  
AND EROSION**  
PG. 8-11



**08**  
**PEST CONTROL**  
PG. 36-37



**03**  
**HERBICIDES**  
PG. 12-20



**09**  
**SPRAY ADDITIVES,  
ADJUVANTS, OTHER**  
PG. 38-40



**04**  
**INSECTICIDES**  
PG. 21-26



**10**  
**LANDSCAPE  
PRODUCTS**  
PG. 41-49



**05**  
**FUNGICIDES**  
PG. 27-31



**11**  
**ICE MELTER**  
PG. 50-53



**06**  
**AQUATICS**  
PG. 32-33





01

## TURF & PLANT HEALTH



VILLAGEOUTDOORS

## TURF & PLANT HEALTH



### ROOTS BIO PAK PLUS 3-0-20

- Provides beneficial bacteria
- 3-0-20 NPK with a collection of micronutrients
- Improves plant soil conditions, great to soil drench stressed plants

**Rate:** 1 Pound in 50 to 100 Gallons of water, drench or spray till soil is saturated  
**Sizes Available:** 5 Lb



### ROOTS HEALTHY START TABLETS 12-8-8

- Condition Soil for sustainable growth with humic acids
- 18-24 month slow release
- Apply in planting hole or with dibble bar

**Rate:** 2 Tablets per 1 Foot of root ball  
**Sizes Available:** 25 Lb



### ROOTS 27-9-9 FOR TREES

- Beneficial microbes sustain fertility over long term
- Addresses trees immediate needs
- Advanced Surfactant helps product penetrate soil

**Rate:** 8 Lb per 100 Gallons soil drench or injection  
**Sizes Available:** 40 Lb



### ROOTS BIO PAM

- Seed inoculant for superior hydroseeding
- Maintains a moist environment for seed germination
- Introduces beneficial rhizosphere bacteria

**Rate:** 4 Oz per 1000 Square Feet  
**Sizes Available:** 5 Lb



### ROOTS PLANT SAVER 4-7-4

- Used for establishing or maintaining plants
- Increases absorption of water
- Provides beneficial bacteria and mycorrhizal fungi

**Rate:** 1 Cup (8 Ounces) per Inch caliper  
**Sizes Available:** 42 Lb bucket



### ROOTS TREE SAVER

- Helps reduce transplant shock and loss rates
- Helps plants deal with stresses such as poor pH, drought, salinity
- Five species of mycorrhizal fungi and six species of beneficial bacteria

**Rate:** 3 Ounces per Inch caliper  
**Sizes Available:** 150x3oz packets, 600 bulk ounces



### E-BLEND 12-20-12

- 14.3% Humic acid
- Improves stress resistance
- 25% MESA, 10.5% Biosolids

**Rate:** 6 Pounds per 100 Square Feet, rototill into soil  
**Sizes Available:** 50 Lb



### C20

- Improves Moisture Penetration
- Promotes Root Expansion
- Replenishes organic resources

**Rate:** Up to 20 Lb per 1000 Squares  
**Sizes Available:** 40 Lb



### ROOTS 3-4-3 MRT

- Organic Based
- Endo and Ecto Mycorrhizal Fungi
- Great for New Plantings

**Sizes Available:** 25 Lb



### PRO MIX POTTING

- Potting Mix with water retention gel and 9 month osmocote fertilizer

Sizes Available: 2 Compressed Cubic Feet



### WOODACE 14-14-14

- For flowering plants in beds, 16 week feed, full micro package

Sizes Available: 40 Lb



### WOODACE 12-3-6 A.C.R.E

- Feeds Acid loving plants in ornamental beds, such as Azaleas, Conifers, Rhododendrons, and Evergreens

Sizes Available: 40 Lb



### HIGH CAL LIME AMP XC

- AMP XC Unlocks Nutrients, supplies high cal lime to help soil, and supplies plant with humid acid for stress relief

Coverage: 8,250 Sq Feet  
Sizes Available: 50 Lb



### TIGER SUL 90

- Elemental Sulfur
- Lower Soil PH

Sizes Available: 50 Lb  
Rates: 2 Lbs per 1000



### ROOTS HOLLY BOOST 6-4-6

- Acid Natural Fertilizer
- Hollytone alternative

Sizes Available: 50 Lb



### 18-6-18 MAG IRON SPECIAL

- Miracle Grow alternative
- NPK and Trace Elements

Sizes Available: 25 Lb



### MILORGANITE

- Non Burning, Slow Release
- Iron for Greening

Sizes Available: 50 Lb



### 18-5-10 STAYGUARD

- Slow release plant food
- Flumioxazin weed PreEmergent

Coverage: 10,000 Sqft  
Sizes Available: 50 Lb





**VILLAGEOUTDOORS**

## 15-8-4 TREE AND SHRUB

### 15-8-4 TREE AND SHRUB

- Safe and non-phytotoxic formula.
- True solution—no special agitation required.
- Compatible with fungicides, herbicides, and insecticides.
- Can be mixed and sprayed in one application.
- Extremely low salt index.

Activ Reach Mycorrhizae Sizes Available: 2.5 Gal



**VILLAGEOUTDOORS**

## 16-0-2 SEA KELP+

### 16-0-2 SEA KELP+

- Promotes rapid growth and rich color.
- Safe for sensitive areas.
- With humic acid and seaweed for soil health.
- Fast-acting and easy to apply.
- Works on turf, ornamentals, veggies, and trees.
- Gentle, non-burning formula.

Sizes Available: 2.5 Gal



### 14-0-14 HUMIC MAX CC

- 14% Humic Max for soil and plant health.
- Ideal for tees, fairways, and sports turf.
- 70% MESA for slow-release nitrogen and quick green-up.
- 100% SOP for safe, fast potassium uptake.

Sizes Available: 50 Lb



### BK REACH

- Sphagnum Peat Moss (60-70%), Processed pine bark (20-25%), Perlite, Calcitic and dolomitic limestone, Wetting agent
- Activ Reach Mycorrhizae

Sizes Available: 2.8 Cu



### BX REACH

- Sphagnum Peat Moss (75-85%), Perlite, Calcitic, dolomitic limestone, Wetting Agent
- Active Reach Mycorrhizae

Sizes Available: 2.8 Cut Ft



### COUNTRY CLUB 30-0-10 .067 ACELEPRYN + .167 DIMENSION

- Mesa, SGN 150, Season long

Sizes Available: 50 Lbs



### COUNTRY CLUB MD 18-3-18

- Mesa, SGN 80, 78% Meth-Ex 1.5% Fe .65% Mg .5% Mn

Sizes Available: 40 Lb



### GYPSPUM DG

- Dispersing granule formula
- Provides calcium and sulfur
- Pelletized for easy application
- Loosens hard-packed soil\*
- \*Saline-sodic soils

Sizes Available: 40 Lb



### PURESPRAY

- Horticultural Oil

Sizes Available: 2.5 Gal



### ROOTS FE 8% 0-5-8

- A concentrated chelated liquid iron product
- For general turf use
- Non-staining formula
- 8% Fe (iron) for quick green up

Sizes Available: 2.5 Gal



THRIVE 0-0-5

### THRIVE 0-0-5

- 0-0-5 Formula: Supplies essential potassium for plant strength.
- Stress Protection
- Improves Water Efficiency
- Supports Root Health
- Safe & Versatile

Sizes Available: 2.5 Gal



### TRANSFILM

- Replaces plant coat pro

Sizes Available: 2.5 Gal



### ANDERSONS 14-14-14

- Slow release plant and flower food, micronutrients, 2-3 month

Sizes Available: 40 Lb



### 16-0-8 + ESCALADE

- Premium herbicide + lawn food.
- Includes 2,4-D, Fluroxypyr, and Dicamba.
- Gradually kills contacted weeds.
- Use cautiously near sensitive plants, especially above 85°F.

Sizes Available: 40 Lb



22-3-10

### 22-3-10

- Soil Fix BioStimulant
- 60% PCU

Sizes Available: 50 Lb



18-0-3

### 18-0-3

- 40% PCU
- 10% Chicken Crumbles
- 1.5 % FE

Sizes Available: 50 Lb



24-0-5

### 24-0-5

- 50% PCU
- 4% FE

Sizes Available: 50 Lb



3-4-3

### ORGANIC GROW MAGIC 3-4-3

- Balanced organic nutrients for steady growth.
- Made from organic, sustainable ingredients.
- Enhances microbial activity and structure.
- Non-burning, pet- and environment-friendly.
- Great for turf, gardens, shrubs, and trees.

Sizes Available: 40 Lb





02

## SEED ESTABLISHMENT AND EROSION



VILLAGEOUTDOORS





### PROFILE 100% WOOD

- 100% Virgin Wood
- Hydromulch
- Dyed Green

Sizes Available: 50 Lb



### PROFILE 70/30 BLEND

- 70% Paper / 30% Wood

Sizes Available: 50 Lb



### PROFILE 50/50 SB

- 50% Wood and 50% Paper
- 100% Recycled Cellulose

Sizes Available: 50 Lb



### TRACKING AGENT 3 WS

- 3lb water soluble packs

Sizes Available: 21 Lb Box



VILLAGEOUTDOORS

8-16-6 HYDROSEED STARTER



### PENNMULCH/ SEED AID

- Faster Turf Establishment
- Better Germination
- Blinds to Soil & Seed
- Easy to Apply

### 8-16-6 HYDROSEED STARTER

- Chicken Crumbles
- 14% Humates
- 2% Kelp
- Liquid Maloasses

Sizes Available: 50 Lb



VILLAGEOUTDOORS

HYDRO - DRENCH

### HYDRO-DRENCH

- Keep seed moist longer for faster germination
- Eliminate hydrophobic soil conditions

Sizes Available: 2.5 Gal



### MIGHTY FINE STRAW

- Wet to tack to ground
- Chopped straw
- Weed free



### STRAW MAT

- Single Net Straw Roll / Double Net
- Erosion Control Blanket
- Great for seed germination

Roll Size: 8 x 112.5 Feet



PREMIUM GRASS SEED



VILLAGEOUTDOORS





VILLAGEOUTDOORS

# PREMIUM GRASS SEED

## AVAILABLE BLENDS:

- Sports Turf 50/50 Mix
- Sun Mix
- Shade Mix
- Sun & Shade Mix
- Sod Mix
- 3-Way Rye Blend
- Tri Mix

25lbs (11.34 kg)





**03**

## **HERBICIDES**



**VILLAGEOUTDOORS**





VILLAGEOUTDOORS

# 18-0-3

50% PCU 1.5 % FE

*Zero Filler*

**40%**

**Hi-Mag Pelletized Lime**

Supplies calcium (Ca) and magnesium (Mg)

**10%**

**Chicken Crumbles**

Improves Soil Biology and increases organic matter

**21%**

**Poly Coat Urea**

Controlled Release Nitrogen last 6-10 Weeks

**20%**

**Urea**

Gives quick green up

**06%**

**Muriate of Potash**

Supplies potassium for better stress tolerance

**03%**

**Ferrous Sulfate**

Provides intense green color response



HERBICIDE

# TRIAD T SELECT™

**FOR SELECTIVE, POSTEMERGENCE  
BROADLEAF WEED CONTROL.**



**Triad T Select™** is a selective, postemergence broadleaf herbicide containing four active ingredients to control listed annual and perennial broadleaf weeds in Kentucky bluegrass, perennial ryegrass, and tall and fine fescues. Weed control symptoms may be seen within a few days after application. The most noticeable symptom is bending and twisting of stems and leaves. Weed death often occurs in 1-4 weeks post-application, depending on the application rate, sensitivity of the target weed, and environmental conditions.

## PRODUCT FEATURES

- Popular tank mix now available in a convenient pre-mix formulation.
- Improved cool-weather performance.
- Excellent postemergence activity with proven rapid and effective weed control performance for some of the toughest broadleaf weeds in turfgrass.
- Controls more than 80 weeds including difficult-to-control species such as plantain, ground ivy, *oxalis*, spurge, speedwell, wild violet.
- Rainfast in 4 hours.

## LABELED USES

- Sod farms
- Ornamental turfgrasses
- Non-crop sites

See label for complete application guidelines and restrictions.

### ACTIVE INGREDIENT

30.89% 2,4-D  
8.23% MCPA  
7.25% triclopyr  
2.77% dicamba

### HRAC GROUP

2,4-D – Group 4  
MCPA – Group 4  
Triclopyr – Group 4  
Dicamba – Group 4

### FORMULATION

Liquid concentrate

### CHEMICAL FAMILY

Phenoxy acids, pyridines,  
benzoic acids

### COMPARE TO

Proprietary formulation

### MODE OF ACTION

Auxin mimic

### RESTRICTED USE

No

### SIGNAL WORD

Warning

### PACKAGING

2 x 2.5 gal, 30 gal drum

### EPA REG NUMBER

89442-56





### BRUSHMASTER

- Great On Poison Ivy
- Translocates to Kill Roots
- Controls Brush, Vines, Broadleaf, Weeds

Rate: 4-15 fl oz per gallon

Sizes Available: Qt



### TRIAD-T

- 4 Way Amine Formula Herbicide

Sizes Available: 2.5 Gal



### DITHIOPYR 2EW

- Pre Emergent Crabgrass Control
- Early Post Emergent Crabgrass Control
- Season Long Control

Rate: Refer to Label

Sizes Available: 1 Gal



### CAVALCADE 4 L

- Long-lasting pre-emergent control of 30 weeds
- Fall application prevents spring weeds
- No staining issues
- Available as sprayable or fertilizer blend

Sizes Available: 2 x 2.5 Gal



### FLUMIOXAZIN 51 WDG

- 3-4 Month Residual
- Generic Sureguard
- Mix with Round Up

Sizes Available: Dry Formula



### SONORA

- Thistle Control
- Generic Lontrel
- Over the Top Function

Rate: .1-.5 fl oz per 1000

Sizes Available: 1 Gal



### ORNAMEC OVER THE TOP

- Selectively controls grasses
- "Over the Top" ability on select groundcovers
- Safe on more than 500 plant species

Rate: Refer to Label

Sizes Available: 1 Qt



### ROUND UP QUIKPRO SC TOTAL

- Non Selective Control
- Pre Emergent control
- Perfect for weed prone area

Rate: 16 fl oz per gallon



### ESCALADE

- Cool season herbicide
- Low use rate

Rate: .75 fl oz per 1000

Sizes Available: 2.5 Gal

## HERBICIDES



### HALO

- Nutsedge Control
- Moves Downward In Plant to Control Tubers
- Complete Control

Rate: .03 Oz

Sizes Available: 1.33 Oz, .03 Oz



### Q4

- Excellent Warm Weather Control
- Controls Crabgrass
- Reseed in 14 day interval

Rate: 2.7-3.1 fl oz per 1000 square feet

Sizes Available: Qt, Gal, 2.5 Gal



### 3D FOAM

- 3 Way Broadleaf Control
- Easy to use aerosol

Sizes Available: 15 Ounce



### QUINTISSENTIAL 1.5L

- Liquid Formula
- Post Emergent Crabgrass Control
- Container Covers Up to an Acre

Rate: R.55 fl oz per 1000

Sizes Available: .5 Gal



### RANGER PRO

- 41% Glyphosate
- Results in 10 Days
- Makes Over 100 Gallons of Solution

Rate: 3 fl oz per gallon

Sizes Available: 2.5 Gal, 30 Gal



### ROUNDUP PROMAX

- 30 Minutes Rainfast
- More Concentrated Formula
- Liquid Formula

Rate: 2 fl oz per gallon

Sizes Available: 1.67 Gal



### ROUNDUP QUIKPRO

- Results in as little as 24 Hours
- Convenient Dry Formulation
- Rainfast in 1 Hour

Rate: 1.5 oz per gallon

Sizes Available: 6.8#



### FIESTA

- Organic Lawn Weed Control
- Moss Algae and Weeds

Rate: 13 fl oz per 1000

Sizes Available: 1 Gal



### FINALSAN

- Non-Selective
- OMRI Listed
- Fast Burn Down

Rate: 10 fl oz per gallon

Sizes Available: 2.5 Gal





### SPEEDZONE

- Cool Weather Performance
- Rainfast in 4 Hours
- Reseed in One Week

**Rate:** 1.1-1.5 fl oz per 1000 square feet  
**Sizes Available:** 1 Gal, 2.5 Gal



### SULFENTRAZONE

- Controls Nutsedge
- Fast Top Results
- Use on younger nutsedge

**Rate:** Refer to Label  
**Sizes Available:** 6 fl oz



### SURGE/ TRIAD SFZ

- Warm Weather Formula
- Water Based
- Nutsedge Suppression

**Rate:** 1.1-1.5 fl oz per 1000 square feet  
**Sizes Available:** 1 Gal, 2.5 Gal



### T/I 2.5G

- Generic Snapshot
- Apply Below Mulch
- Use Spred Rite for Accurate Application

**Rate:** 2.5 lbs per 1000  
**Sizes Available:** 50#



### T-ZONE/ TRIAD TZ

- Fastest Triclopyr Combo on Market
- Great Control of Wild Violet
- Ester Formula

**Rate:** 1.1-1.5 fl oz per 1000 square feet  
**Sizes Available:** Qt, Gal, 2.5 Gal



### TENACITY/ MESO

- Pre and Post Emergent Weed Control
- Use at time of seeding
- Easy to use in Hydroseeders

**Rate:** Refer to Label  
**Sizes Available:** 8 fl oz



### TREFLAN 5G

- Economical Pre Emergent Weed Control
- Apply Below Mulch
- Use Spred Rite for Accurate Application

**Rate:** 2 lbs  
**Sizes Available:** 40#



### TRIAD

- Economical Control of Broadleaf Weeds
- Low Order
- Applicator 3 Way Herbicide

**Rate:** 1.1-1.5 fl oz per 1000 square feet  
**Sizes Available:** 2.5 Gal



### PRODOXABEN/ CREW

- Generic Crew
- Granular Pre-Emergent
- Safe for beds and lawns

**Rate:** Refer to Label  
**Sizes Available:** 50 Lb

## HERBICIDES



### ESPLANADE 200 SC

- 6 Month Pre Emergent
- Low Use Rate

Sizes Available: 1 Qt



### DIURON 4L

- Can be used as a tank-mix partner for resistance management
- Excellent on annual grasses such as crabgrass, foxtail, and annual ryegrass
- Convenient liquid formulation

Sizes Available: 2.5 Gal



### FERT + MESO

- 21-22-04 Starter
- Meso Pre M with Seeding

Rate: Covers 9,000 sqft

Sizes Available: 40 Lb



### TRIMEC 992

- Economical Control of Broadleaf Weeds
- Applicator Formula
- Quick Knock Down

Rate: 1.1-1.5 fl oz per 1000 square feet

Sizes Available: 1 Gal



### ARKON

- Post-emergent control of sedges and kyllingas.
- Reduces nutsedge tubers and viability.
- Targets nutsedge, kyllingas, and broadleaf weeds.
- For cool & warm-season turfgrass.
- Safe for golf courses, lawns, parks, and sports fields.

Sizes Available: 1 Gal



### BELOUHKA

- Fast Burn Down
- Generic Scythe

Sizes Available: 2.5 Gal



### BOULDER 6.3

- User-friendly PPE requirements and simplified operator logistics
- Proprietary emulsifiers decrease the petroleum solvent required
- Improved mixing characteristics and favorable toxicity profile

Sizes Available: 2.5 Gal



### DITHIOPYR 2EW

- Provides early post-emergent crabgrass control
- High performance
- Excellent turf safety
- Instantly blooms upon dilution even in cold water
- Low odor
- Stable viscosity in cold temperatures

Sizes Available: 1 Gal



### FLUMIGARD

- Fast-acting contact herbicide.
- Controls filamentous algae in copper-sensitive areas.
- Broad-spectrum weed control, pre & post-emergent.
- Surface or subsurface application.

Sizes Available: 0.5 Gal





### FLUMIOXAZIN 51 WDG

- Pre & early postemergence weed control.
- Controls 100+ tough weeds.
- Fast-acting, long-lasting results.
- Flexible application options.
- Low volatility.
- Unique mode of action.
- Great tank-mix partner.
- High value.

Sizes Available: 1 Pound



### FZP 2EC

- Control perennial and annual grass weeds.
- Extremely fast and effective.
- Can be applied over-the-top without damaging valuable plants.

Sizes Available: Qt



### GRASSMASTER

- Broad-spectrum weed control.
- Fast results with residual activity.
- No compost/manure restrictions.
- Use alone or with liquid fertilizer.

Sizes Available: 2.5 Gal



### MAINLINE HERBICIDE

- PPO + ALS inhibitors for fast, lasting control.
- Controls 149 weed species.
- Dual action fights resistance.
- Flexible rates for selective or total control.
- Safe near sensitive areas.

Sizes Available: 2.5 Gal



### SURMISE PRO

- Controls broadleaf weeds and grasses.
- Great tank-mix with preemergent herbicides.
- Ideal pre-plant for turf and ornamentals.
- Low residual—safe near sensitive areas.
- Helps manage herbicide resistance.

Sizes Available: 1 Gal



### TRYCOLOPYR 4EC

- Ester formulation
- Selective control
- Ideal for pasture restoration
- Permissible to treat seasonably dry wetlands
- Tank mix compatible (as directed on label)
- Easily absorbed through leaves and roots
- Foliar and Basal treatments

Sizes Available: 2.5 Gal



### CROSSROAD

- Excellent control of woody plants, brush, annual and perennial broadleaves. Apply Below Mulch
- Rainfast within two hours.
- Can be applied in-season to foliage or during dormancy.
- Excellent choice for turf applications for the control of many annual, and perennial broadleaf weeds.

Sizes Available: 4 x 1 Gal, 2 x 2.5 Gal, 5 x 30 Gal Drum



### RANGE STAR

- Controls a wide range of tough broadleaf weeds.
- Quickly absorbed through shoots and roots, moving to active growth areas.
- Suitable for aerial, broadcast, band, or spot spray applications.

Sizes Available: 2 x 2.5 Gal



### ALLSTAR

- Four-way broad-spectrum selective herbicide.
- Fast-acting formula for cool- and warm-season turfgrasses.
- Controls grassy weeds, nutsedge, and tough broadleaf weeds.
- Targets spurge, clover, dollarweed, ground ivy, oxalis, wild violet, and Virginia buttonweed.

Sizes Available: 64 fl oz, 2.5 Gal, 30 Gal Drum

# Quintessential

HERBICIDE

TAKING QUINCLORAC PERFORMANCE TO THE NEXT LEVEL.

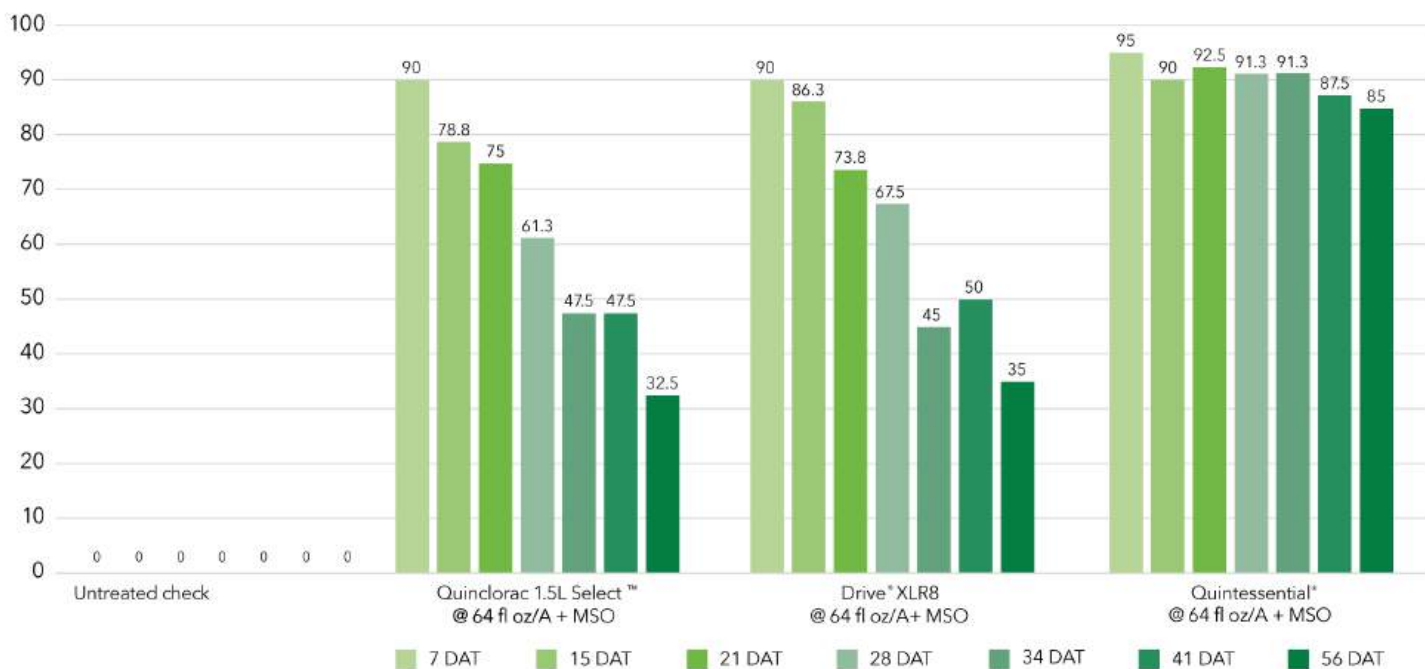
## RAINFAST COMPARISON

*"In any condition that 's going to limit herbicide absorption into the plant, Quintessential is going to outperform other quinclorac-containing products."*

Dr. Shawn Askew,  
Virginia Tech

X In a rainfast comparison with a competitive quinclorac product, the results indicate efficacy at 2 hours and beyond with **Quintessential**®, while it takes 12 hours for a competitive product to achieve the same level of effectiveness.

## % CRABGRASS CONTROL 3-5 Tiller (2019 Tennessee)



W See label for complete application guidelines and restrictions.

©2023 Albaugh, LLC. Albaugh, the A logo, and Quintessential are registered trademarks of Albaugh, LLC. Drive is a registered trademark of BASF Corporation. Always read and follow label restrictions, precautions, and directions for use. This product may not be registered for sale or use in all states or counties. Please check with your state agency responsible for pesticide registration to ensure registration status.





**04**

**INSECTICIDES**



**VILLAGEOUTDOORS**



# Eraditick™

**TICK KILLER CONCENTRATE**

Provide an **eco-friendly** insecticide consisting of **natural and plant-based active ingredients** for use to **kill and control ticks** for your clients from the **leader of essential oil pesticides.**



PATENT PENDING U.S.  
SERIAL NO. 18/769,974



**PATENT-PENDING  
ESSENTIAL OIL  
FORMULATION**

Eraditick™ Tick Killer Concentrate is an effective natural formulation for killing and controlling ticks in outdoor commercial and residential turf and ornamental areas.

- Kills and controls adult ticks on contact with lasting residual control that kills long after initial application.
- For use in standard pump sprayers, commercial foggers and backyard misting systems.

Offer your residential and commercial customers:

- An effective, family- and pet-friendly solution that uses environmentally friendly essential oils as the active ingredients.
- Quick re-entry into the treated area; within an hour.
- Very pleasant, quickly dissipating aroma.
- Same efficacy as synthetic products!

Eraditick™ Tick Killer Concentrate can be mixed with water at a rate of three to six ounces per gallon. One gallon of solution should cover 1,000 square feet of lawn. Application can be applied by a standard sprayers, commercial foggers, or backyard misting systems.

**NEW  
FOR  
2025!**



Eraditick™ Tick Killer Concentrate is a safer alternative to harsh chemical pesticides when used as directed. The patent-pending essential oil formulation is effective, safe, and environmentally friendly for plants and animals (other than ticks, of course).

Independent research shows that Eraditick™ Tick Killer Concentrate is extremely effective as a direct spray and as a residual insecticide, eliminating up to **100%** of the sample, even nine days after initial treatment.

Chart 1: Average Percent Mortality of Deer Ticks After Exposure to Eraditick				
Aged Evaluation	Test Substance	4 HrAT	4 DAT	9 DAT
0 DAT	Control	0%	0%	5%
	Competitor (label rate)	23%	58%	78%
	Eraditick (3 oz/gal)	33%	85%	95%
	Eraditick (6 oz/gal)	65%	100%	100%
7 DAT	Control	0%	0%	0%
	Competitor (label rate)	18%	50%	65%
	Eraditick (3 oz/gal)	28%	80%	100%
	Eraditick (6 oz/gal)	45%	95%	98%

Source: Piedmont Research Services, Fayetteville, Georgia  
HrAT = Hours After Treatment, DAT = Days After Treatment



**ARKION LIFE SCIENCES**  
551 Mews Drive, Suite J  
New Castle, Delaware 19720



For more info contact  
**Toni Simei**  
1-800-468-6324  
tjsimei@arkionls.com  
www.ArkionLS.com

**Arkion®**  
LIFE SCIENCES





INSECTICIDE

# DURAFLEX ZC

## CONTROLLED RELEASE INSECTICIDE

### Advantages of using DURAFLEX ZC

- Combination Chemistry® contains an adulticide and two IGRs
- Breaks the life cycle of insect reproduction to control Fleas, Stored Product Pests, Cockroaches, Mosquitoes, Lone Star Ticks, and other listed insect pests.
- Fast-acting
- Low-odor
- For indoor/outdoor use

### How it Works

DuraFlex ZC is the first microencapsulated concentrate that combines Bifenthrin with Novaluron and Pyriproxyfen. These 3 active ingredients provide 3 modes of action. Both IGRs create a synergistic effect resulting in early nymph control and death. By constructing capsules with a matrix of thinner and thicker capsule walls, microencapsulated technology allows immediate release of some capsules for an incredibly quick knockdown, while some capsules are made to diffuse active ingredient over a period of weeks, thus providing a long-lasting residual.

### Target Pests

Fleas, Flies, Ants, Mosquitoes, Cockroaches, Stored Product Pests

### Use Sites

Indoor/Outdoor, Homes, Commercial Buildings, Industrial Buildings, Recreational Areas, Ornamentals



### Active Ingredients

3.95% Bifenthrin  
1.3% Novaluron  
1.3% Pyriproxyfen

### Packaging

- 6 x 1 Quart
- 80 cases per pallet



Always read and follow product label directions.

[controlsolutionsinc.com/csi-pest/general-insecticide/duraflex-zc](http://controlsolutionsinc.com/csi-pest/general-insecticide/duraflex-zc)



**Control Solutions Inc.**

A member of Adama Consumer and Professional Solutions

## INSECTICIDES



### DUOCIDE

- Kills 50+ common lawn pests.
- DG granules dissolve fast into soil.
- "Double kill" action above & below surface.
- Contains bifenthrin + carbaryl.

Sizes Available: 40 Lb



### DIAMID T&O

- Season-long grub and caterpillar control.
- Kills billbugs and bluegrass weevils.
- Flexible watering timing.
- Safe for earthworms and honeybees.

Sizes Available: 1 Qt



### DURAFLEX ZC

- Triple action: adulticide + 2 growth regulators.
- Controlled release for fast and lasting control.
- Versatile use indoors and outdoors.
- Low odor formula.
- Kills mosquitoes up to 30 days after treatment.

Sizes Available: 1 Qt



### ALOFT LC G

- Residual and Curative Grub
- Insect Control

Sizes Available: 30 Lb



### ABAMECTIN

- Controls leaf miners, mites
- Suppresses whiteflies, thrips, and aphids
- Avid alternative

Sizes Available: 1 Qt or 1 Gal



### BIFEN 7.9

- Bifenthrin active
- Broad spectrum uses
- Talstar alternative

Sizes Available: 1 Gal



### SEVIN

- Carbaryl Active
- Maintain Agitation in spray tank
- Preventative and Curative Properties

Sizes Available: 2.5 Gal



### GRUBOUT DG

- Labeled for Pots
- Granular Imidacloprid

Sizes Available: 40 Lb



### DYLOX

- Curative Grub Control
- Must be watered in
- Use after damage is present

Sizes Available: 30 Lb





### BIFENAMITE 2SC

- Provides long-lasting residual control for late hatches when used as directed
- Can be tank mixed with other insecticides for broad-spectrum control
- Wide range of use sites

Sizes Available: 1 Qt



### HACHI-HACHI SC

- Broad-spectrum pest control.
- Unique chemistry targets tough thrips.
- Improved formula—safer, low odor.
- Active on all stages: eggs, larvae, adults.
- Also suppresses mold.
- No known resistance.

Sizes Available: 64 Fl. Oz.



### HEXAMITE

- Miticide
- 60 Day Residual
- Ovicide traits prevent egg lay of next generation

Sizes Available: 32 Oz



### IMIDACLOPRID 2F

- Turf and Ornamental
- Merit Alternative
- Liquid Formulation

Sizes Available: Gal



### TRI-STAR

- Controls indoor & outdoor pests.
- Kills aphids, leaf miners, and more.
- Up to 6 weeks of residual control.
- 12-hour re-entry interval.
- Compatible with miticides & fungicides.

Sizes Available: 1 Qt



### PURESPRAY

- Horticultural Oil
- Rate Varies Upon Weather Conditions
- Protect Plants From Pest

Sizes Available: 2.5 Gal, 55 Gal



### STRYKER AEROSOL

- Bee Spray
- 20 ft Spray

Sizes Available: Aerosol



### TAURUS SC

- Generic Termidor
- Non repellent insecticide

Sizes Available: Gal



### ZYLAM

- Liquid formulation of dinotefuran
- Used as a drench or soil injection
- Translaminar activity to quickly move through the leaf

Sizes Available: 1 Qt

## INSECTICIDE

# DIAMID™ T&O

**DELIVERS SEASON-LONG CATERPILLAR AND GRUB CONTROL.**



**Diamid™ T&O** insecticide utilizes the active ingredient chlorantraniliprole to deliver season-long grub control with tremendous application flexibility and convenience. The highly concentrated formulation in Diamid T&O performs best when applied early. A single (4 – 8 fl oz/A) application, in early spring, will deliver control of all grub species and key surface feeding pests including several species of caterpillars as well as annual bluegrass weevil.

## PRODUCT FEATURES

- Season-long control of all white grub species and caterpillars including black cutworms, sod webworms, and fall armyworms.
- Excellent billbug and annual bluegrass weevil control.
- Flexible timing of rainfall or irrigation post application.
- No known adverse effects on beneficial and non-target organisms, including earthworms and honeybees.

## LABELED USES

- Commercial ornamental nurseries and greenhouses
- Commercial sod farms
- Golf courses
- Sports and recreational turf
- Lawns and landscaped areas on and around residential, commercial, and institutional properties
- Interior plantscapes

See label for complete application guidelines and restrictions.

### ACTIVE INGREDIENT

34.05% chlorantraniliprole

### IRAC GROUP

28

### FORMULATION

Suspension concentrate

### CHEMICAL FAMILY

Anthranilic diamide

### COMPARE TO

Acelepryn®, Durentis®

### MODE OF ACTION

Ryanodine receptor modulator

### RESTRICTED USE

No

### SIGNAL WORD

Caution

### PACKAGING

4 x 1 qt

### EPA REG NUMBER

89442-70





**05**

**FUNGICIDES**



**VILLAGEOUTDOORS**

# ENCLAVE®

## Flowable Fungicide



**ENCLAVE** is a broad-spectrum fungicide that provides outstanding prevention and control of most major fungal diseases in turf and ornamentals. This synergistic formulation provides quad action protection, enhanced performance and turf quality. ENCLAVE's multiple modes of activity also reduce the probability of resistance development.

### Features & Benefits

- Synergistic Combination Chemistry®
- Disease resistance management provides four modes of action
- Economical with outstanding performance and great value compared to other fungicides

### Active Ingredients

28.7% Chlorothalonil  
9.4% Iprodione  
9.4% Thiophanate methyl  
2.8% Tebuconazole

### Packaging

2 x 2.5 gal

### Use Sites

Golf courses, landscape ornamentals, nursery, professional sports turf, greenhouses

### Application Rates

**Turf:** Apply 3 to 8 oz./1,000 ft<sup>2</sup>

**Ornamentals:** Apply 32-44 oz./100 gallons

(See label for specific uses and rates.)

### Mode of Action

Group 1,2,3,M. Making ENCLAVE a very powerful product with broad-spectrum control of a very wide fungal pathogens

### Broad-spectrum disease control (see label for additional diseases)

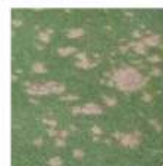
#### TURF DISEASES



Anthracnose



Brown Patch



Dollar Spot



Pink Snow Mold



Gray Snow Mold



Summer Patch

#### ORNAMENTAL DISEASES



Anthracnose



Black Spot on  
Roses



Blights



Leaf Spots



Powdery Mildew



Scabs



Always read and follow product label directions.

[controlsolutionsinc.com/quali-pro/golf/fungicide/enclave](http://controlsolutionsinc.com/quali-pro/golf/fungicide/enclave)

**QUALI-PRO**

[quali-pro.com](http://quali-pro.com)





### AZOXY SELECT

- Azoxystrobin
- Highly Systemic Formulation

Rate: .75-1.5 fl oz per 1000 sq ft

Sizes Available: 1 Gal



### CHLOROTHALONIL 720

- Brand Alternative Daconil
- Contact Fungicide, Low Resistance
- Fungicide Class: Nitrial

Rate: 2-5.5 fl oz per 1000 sq ft

Sizes Available: 2.5 Gal



### CAMELOT O

- Fungicide/Bactericide for foliar disease control.
- OMRI & NOP certified for organic production.
- Safe for ornamentals, veggies, fruits, and herbs.
- Unique copper soap formula for clean coverage.
- Low-copper content—gentle on plants.

Sizes Available: 1 Gal



### ENCLAVE

- Fast-acting and long-lasting disease protection
- Controls a broad spectrum of fungal pathogens at the same time
- Provides outstanding value per acre
- Delivers both preventive and curative disease control
- Helps reduce and prevent disease resistance

Sizes Available: 2.5 Gal



### IPRODIONE 2 SELECT

- Effective for all seasons
- Local Penetrant
- Fungicide Class: Dicarboximides

Rate: 2-8 fl oz

Sizes Available: 2.5 Gal



### MYCLOBUTANIL 20EW T&O

- Brand Alternative Eagle 20EW
- Labeled for Residential Turf and Ornamental
- Fungicide Class: DMI

Rate: .5-2.5 fl oz per 1000 sq ft

Sizes Available: 1 Gal



### AZPROP G

- Azoxystrobin Propiconazole Combo
- Fungicide Class: DMI/Strobilurin

Rate: 3.0 lb per 1000 sq ft

Sizes Available: 30 Lb



### AZTEB SELECT

- Defends against both soil-borne and foliar diseases
- Provides continuous protection for up to 28 days
- Complete root-to-leaf distribution
- Convenient liquid formulation for easy tank mixing
- Low use rate

Sizes Available: 4 x 1 Gal



### PPZ 41.8 SELECT

- Brand Alternative Spectator
- Broad Spectrum of Control
- Fungicide Class: DMI

Rate: .37-1.45 fl oz per 1000 sq ft

Sizes Available: 1 Gal

## FUNGICIDES



### PROPICONAZOLE 14.3 SELECT

- Brand Alternative Banner Maxx
- Controls over 18 Turf Diseases
- Fungicide Class: DMI

**Rate:** .5-4 fl oz per 1000 sq ft  
**Sizes Available:** 2.5 Gal



### TM 4.5 SELECT

- Brand Alternative 3338 F
- Dollar Spot is commonly resistant
- Fungicide Class: Benzimidazoles

**Rate:** 2-5 fl oz per 1000 sq ft  
**Sizes Available:** 2.5 Gal



### FLUAZINAM 40SC

- Generic Secure
- Contact Fungicide

**Sizes Available:** 2.5 Gal



### TEBUCONAZOLE 3.6 SELECT

- Controls Difficult Diseases
- Effective on Dollar Spot
- Fungicide Class: DMI

**Rate:** .6-1.1 fl oz per 1000 sq ft  
**Sizes Available:** 1 Gal



### XZEPLAR

- Immediate knockdown
- Preventative and Curative Properties
- Fungicide Class: Carboxamides

**Rate:** .21-.26 oz per 1,000 square feet  
**Sizes Available:** 11.4 Oz



### MEFENOXAM 2 AQ

- Alternative to Subdue Max
- Pythium Control
- Fungicide Class: Phenylamide

**Rate:** .5-1 fl oz per 1000 sq ft  
**Sizes Available:** 1 Gal



### FAIRVIEW SELECT

- Broad-spectrum disease control for turfgrass.
- For golf course use only (greens, tees, fairways, aprons).
- Combines FRAC 29 + FRAC 3 actives for resistance management.
- Works both systemically and on contact.
- Effective on warm- and cool-season grasses.

**Sizes Available:** 2 x 2.5 Gal



### FLUDIOXONIL SC

- Broad-spectrum protectant fungicide for turf and ornamentals.
- Disrupts fungal cell osmotic balance, causing cell rupture.
- Easy-to-use suspension concentrate formulation.
- Controls pink & gray snow mold, bentgrass dead spot, and anthracnose.

**Sizes Available:** 4 x 1 Gal



### MANZATE MAX

- Broad-spectrum fungicide for select outdoor crops. Broad Spectrum of Control
- Provides effective protection against fungal diseases.

**Sizes Available:** 2.5 Gal



**FUNGICIDE**

# AZPROP G SELECT™

**CONVENIENT SPREADABLE GRANULAR FORMULATION  
OF TWO POWERFUL ACTIVE INGREDIENTS.**



AzProp G Select™ is formulated on a granular carrier designed for the control of more than 25 turfgrass diseases and is perfect for use by lawn care applicators and other turf management professionals. May be used to control certain diseases on turf in golf courses, lawns and landscape areas around residential, institutional, public, commercial and industrial buildings, parks, recreational areas, and athletic fields.

## PRODUCT FEATURES

- Two modes of action for disease-resistance management and broad-spectrum control.
- Excellent rotational product for programmed disease management.
- Defends against both soil-borne and foliar diseases.
- Complete root-to-leaf distribution.
- Excellent residual control.
- Easy-to-use spreadable granular formulation for convenient application.
- Up to 28 days systemic disease protection with one application.

## LABELED USES

- Golf turf
- Residential lawns and landscape
- Parks/Rec
- Athletic fields
- Institutional, commercial, industrial, and public grounds

See label for complete application guidelines and restrictions.

### ACTIVE INGREDIENTS

0.31% azoxystrobin  
0.75% propiconazole

### FRAC GROUP

Azoxystrobin – Group 11  
Propiconazole – Group 3

### FORMULATION

Spreadable granular

### CHEMICAL FAMILY

Group 11 Strobilurin/Qol inhibitors  
Group 3 Triazole

### COMPARE TO

Headway® G

### MODES OF ACTION

Cell membrane disrupter  
and respiration inhibitor

### RESTRICTED USE

No

### SIGNAL WORD

Caution

### PACKAGING

30 lb. bag

### EPA REG NUMBER

89442-53





06

AQUATICS



VILLAGEOUTDOORS





### AQUAMASTER HERBICIDE

- Aquatic Glyphosate
- Controls Water Lettuce and Cattail
- Use with Surfactant

Sizes Available: 2.5 Gal Jug



### ARGOS

- Algaecide
- Controls Algae in 1-4 Days
- Copper formulation

Sizes Available: 1 Gal



### CUTRINE PLUS G

- Granular Formulation
- Long Lasting
- Treats Algae and Chara

Sizes Available: 30#



### BOWL GAME BLACK & BLUE

- Black and Blue Pond Dye
- Reduces sunlight penetration
- Safe for fish and aquatic species, waterfowl, wildlife & pets
- Highly concentrated

Sizes Available: 1 Gal



### FLURIDONE

- Bleaching injury symptoms occur in 7 to 10 days
- Excellent control with minimal environmental impact
- Can be applied via surface and subsurface applications

Sizes Available: 1 Gal



### COPPER SULFATE F20

- F20 Copper Sulfate

Sizes Available: 50 Lb



### ECOMAZAPYR 2 SL

- Controls 185 weed and brush species.
- Effective on aquatic vegetation.
- Ideal for sensitive areas.
- Long-lasting residual control.

Sizes Available: 2.5 Gal



### DIQUAT

- Contact action on green tissue.
- Glyphosate alternative.
- Fast burndown—results in hours.
- Non-selective control.

Sizes Available: 1 Gal



### HYDRATED LIME TYPE S

- Type S Hydrated Lime for versatile landscaping and construction use.
- Ideal for soil stabilization, masonry, and water treatment.
- Improves mortar workability and durability.

Sizes Available: 50 Lb





**07**

**SPORTS FIELDS**



**VILLAGEOUTDOORS**





### SURE DRY SAF

- Calcined clay from North Mississippi.
- Absorbs moisture, reduces slick spots.
- Use sparingly during rain.

Sizes Available: 50 Lb



### SAF 516

- Improves soil and field drainage.
- Reduces compaction for safer play.
- Enhances turf strength and recovery.
- Boosts root development.
- Easy, safe field application.

Sizes Available: 50 Lb



### TURFACE MARMOUND CLAY

- Ideal for mounds and batter's boxes.
- Screened 1/2" for clean material.
- Compatible with conditioners.
- Used from youth to pro levels.

Sizes Available: 50 Lb or Bricks



### SAYMOUR FIELD WHITE

- Long-lasting athletic field paint.
- Dries in 15 min and safe for grass.
- Covers ~300 ft per can.
- 3-5 stripes with #Z-607 machine.
- Fits most marking machines.

Sizes Available: Can



### ATHLETIC FIELD MARKER

- Bright white field marking chalk.
- Non-toxic and easy to apply.
- Made from ground limestone.
- High in calcium carbonate.

Sizes Available: 50#



### TURFACE CLAY BRICKS

- 100% pure virgin clay blocks.
- Ideal for mounds and batter's boxes.
- Moisture-sealed 8-block packs.
- Pliable and easy to shape.

Sizes Available: Bricks





08

PEST CONTROL



VILLAGEOUTDOORS





### GRANULAR DEER REPELLENT

- Approximate Coverage at 20" Bands: 1,500 Linear Feet.
- Easy-To-Use.
- No special equipment needed.
- Long-lasting- 40-60 days.
- Won't harm animals, people or plants when used as directed.

Sizes Available: 22 Lbs



### DEER OUT

- Liquid Formulation
- 30-60 Day Residual
- Natural Product

Sizes Available: Qt, Gal, 2.5 Gal



### DEER PRO SUMMER & WINTER

- With Thiram
- Winter long control

Sizes Available: 2.5 Gal



### BIRD NETTING

- 14' x 300'
- Easy to use

Sizes Available: 14' x 300'



### ERADITICK

- Family- and pet-friendly solution.
- Quick re-entry into the treated area; within an hour.
- Very pleasant, quickly dissipating aroma.
- Same efficacy as synthetic products!

Sizes Available: 2.5 Gal



### NECTUS BAIT

- Peanut butter flavored bait

Sizes Available: 16 Lbs



### PRO PELL

- Essential oil blend repels rodents.
- All-natural and safe around pets and kids.
- Non-toxic—won't harm wildlife.
- Strong scent drives rodents away.

Sizes Available: 1 Gal



### PROTECTA RTU & EVO EXPRESS

#### PROTECTA RTU:

- Compact, tamper-resistant mouse bait station.
- Holds multiple BLOX or soft bait packs.
- Triangular design fits corners and walls.

#### EVO EXPRESS:

- Tamper-resistant—safe for kids and pets.
- Versatile for baiting or trapping.
- Durable 100% recycled plastic.

Sizes Available: Bait Station



### FLIGHT CONTROL MAX

- An ECO-Friendly and 100% Effective Geese Repellent
- Granular mole Repellent.
- The most affordable and effective method for how to get rid of geese.
- Odor free

Sizes Available: 1 Gal (128 oz.)



09

**SPRAY ADDITIVES,  
ADJUVANTS, OTHER**



VILLAGEOUTDOORS





### AUDIBLE 80 SURFACTANT

- High-quality nonionic surfactant.
- Improves coverage and wetting.
- Reduces surface tension.
- Enhances spray spreading.
- Meets 80/20 label requirements.

Sizes Available: 1 Gal



### COMPLETION WATER CONDITIONER

- Highly effective water conditioner.
- Lowers pH of tank mixes.
- Contains AMS for better herbicide uptake.
- Prevents hard water interference.
- Compatible with most pesticides.
- Boosts mix performance.
- Easy to handle and store.

Sizes Available: Qt



### DELINEATE FOAM MARKER

- Easy to use.
- Works with any water.
- Tough & flexible formula.
- Weather-resistant.
- Creates firm foam lasting 30+ minutes.

Sizes Available: 1 Qt



### DOUBLE COVERAGE

- Enhances performance of oil-recommended actives.
- Wets canopy thoroughly.
- Improves spray spread and penetration.
- Boosts uptake and distribution.

Sizes Available: 1 Gal



### DRAPTH PICK QT

- Conditions mixing water.
- Color indicator shows pH range.
- Buffers and improves compatibility.
- Aids pesticide and nutrient mixing.
- Acts as premium surfactant.
- Improves wetting and penetration.

Sizes Available: 1 Qt



### HASH MARK

- Concentrated spray colorant.
- Visually confirms spray coverage.
- Environmentally safe.
- Dissipates naturally.
- Safe for turf and ornamentals.
- Tank-mix compatible.

Sizes Available: 1 Qt



### MOTION MSO

- Modified seed oil with select emulsifiers.
- Compatible with all MSO-recommended herbicides.
- Improves cuticle penetration and delivery.
- Enhances wetting and diffusion.
- Slows evaporation for better uptake.

Sizes Available: Qt



### ONSIDE KICK TANK CLEANER

- Use before next pesticide
- Prevents tank-mix contamination
- Highly alkaline pH
- Dissolves acid-active ingredients
- Reduces carryover risk
- Protects and extends equipment life

Sizes Available: Qt



### PLAYOFF

- Concentrated fragrance to mask chemical odors
- Doesn't affect chemical efficacy of active ingredients
- Doesn't negatively affect sensitive turf, ornamentals, or other plants
- Minimizes detection of spray applicators in public areas.

Sizes Available: Qt



### REVERSE DEFOAMER

- Water-based silicone emulsion which can be used either to prevent foam or to knock down existing foam
- Reduces mixing time
- Maximize spray tank capacity
- Safe to add to any tank mix

Sizes Available: Defoamer



### YARDAGE

- Easy-to-use multifunctional formula
- Lowers spray solution pH
- Prevents alkaline hydrolysis of sensitive pesticides
- Reduces surface tension for better coverage
- Improves spray droplet spread and penetration
- Enhances uptake of active ingredients
- Ensures consistent droplet size and uniform coverage
- Safe for use in and around aquatic areas

Sizes Available: 1 Gal



### ETHEPHON 2SL

- Slows turf growth
- Used to remove unwanted fruit on apple trees, crabapples, carobs, and olives
- For commercial use only

Sizes Available: Proxy PGR



### TRIN-PAC SELECT

- Reduce turf maintenance costs.
- Increase the color, quality, and density of turf.
- Reduce turf growth by 50% for up to four weeks.
- Formulation low-odor and mixes easily.
- Better drought resistance and stress recovery.
- Rainfast within 1 hour after application.
- Can be used to extend the life of turf-marking paint.

Sizes Available: 2 x 1 Gal, 2 x 2.5 Gal

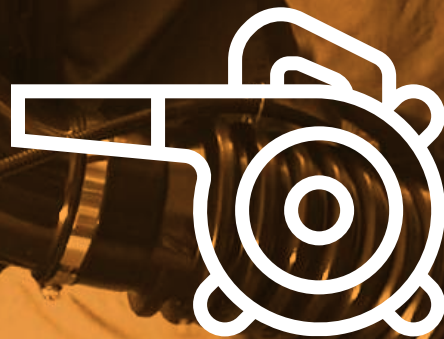


### PBZ 2SC

- Reduced turf maintenance costs.
- Slowed vertical growth and reduced mowing for 6-8 weeks.
- Improve turf color, quality, and density.
- Reduced potential for scalping.
- Suppression of Poa annua.
- Improved playability due to increased turf density and reduced vertical growth.

Sizes Available: 4x1 Gal





10

LANDSCAPE  
PRODUCTS



VILLAGEOUTDOORS





# RedMax<sup>®</sup>

## DOMINATE YOUR LANDSCAPE.



## EBZ9000

### THE INDUSTRY'S HIGHEST BLOW FORCE.

Experience the unmatched power and unexpected comfort of the all-new RedMax EBZ9000. 56 newtons of blow force are packed into a lightweight frame that withstands tough, daily use. And, with up to 25% longer run-time than the competition\*\*, prepare to dominate the landscape like never before.

### EBZ9000/RH

SPECIFICATIONS	EBZ9000/RH
Displacement (cc)	79.4
Power Output (hp)	5.5
Air Speed (mph)	216
Air Volume (cfm)	1245
Blowing Force (N)	56
Dry Weight (lbs)	26.5
Usage	Commercial
Warranty	2 Years



#### COMMERCIAL-GRADE 2-STAGE AIR FILTER

Delivers maximum filtration of fine debris for added protection and longer service life



#### MULTIPLE THROTTLE OPTIONS

Available with both a tube mounted and frame-mounted throttle to suit any application



#### INDUSTRY'S LARGEST FUEL TANK\*

91.3 fl. oz. tank offers long running time and less refueling trips



\*\*Based on internal run-time testing vs leading competition in its class, per full tank of fuel.





# SMITH™

## MULTI-USE

Lithium-ion Powered  
**NO MORE  
PUMPING!**

**LEAK RESISTANT CAP and CHECK VALVE -**

Keeps the chemicals in the tank and off of you.

**21" POLY-LINED STAINLESS STEEL WAND -**

Designed for chemical resistance and durability.

**PROFESSIONAL SHUT-OFF with  
COMFORT GRIP, LOCK & FILTER -**

Can be easily operated with heavy-duty work gloves.

**HEAVY-DUTY REINFORCED HOSE -**

Prevents hose from kinking.

**FULLY PADDED BACK HARNESS -**

For all day comfort.

**VITON® SEALS -**

Resists harsh chemicals.



**18V / 2.1 Ah  
LITHIUM-ION BATTERY  
and CHARGER (Included)**

**50G  
PER CHARGE**

SPRAYS  
UP TO 4 hrs.  
PER CHARGE



**VITON  
SEALS**

CHEMICALLY  
RESISTANT TO  
SWELLING AND  
HIGH TEMPERATURES

**UP TO 34'**  
SPRAY DISTANCE

for TARGETED  
APPLICATIONS  
FROM A DISTANCE

# 4Gal.

## LITHIUM-ION BACKPACK SPRAYER

**190576**

**ZS4000**  
COMMERCIAL

# STAND UP FOR A PERFECT CUT.

Stability. Agility. Profitability. With a compact size, extra ground clearance and large drive tires, the ZS4000 gets over and around obstacles and on to the next job.



## STAND-ON OPERATOR STATION

The operator-station design and internal fuel tank provide excellent “center of mass” stability for agility and maneuverability – even on uneven terrain.

## OPERATOR PAD

Maintain your mower efficiently with the easily removable operator pad.

## ANTI-VIBRATION PLATFORM

The vibration-dampening platform reduces fatigue for a smooth, comfortable ride. The platform can also be flipped up for use as a walk-behind mower.

## INTUITIVE CONTROLS

Maintain total control right at your fingertips. Take command of the job with smooth, dampened controls and tool-free, adjustable tracking.



## BULLNOSE AIRFX DECK

A heavy-duty 48-, 52- or 61-inch AirFX deck with Air-Gap baffles and bolt-on, steel-fabricated spindles cuts the toughest, tallest grass down to size. Its innovative technology lifts grass to the cutting blade and gives you a cleaner cut.

If you require a 36-inch cut, a 36-inch ZS4000 is also available with the tough, adjustable DuraDeck cutting system.

## POWERFUL ENGINE PERFORMANCE

Efficiently power through the workday and take on jobs of all sizes with Kawasaki engine options from 19.0-26.0 hp.

## HYDRO-GEAR ZT-3100 OR ZT-3400 HYDROSTATIC TRANSMISSION

Provides all the torque you need for long hours and smooth operation.

**2000**  
HOURS

OR

**3**  
YEARS

LIMITED  
WARRANTY







VILLAGEOUTDOORS

# GROUND PROTECTION MATS



## LANDSCAPE PRODUCTS



### 3/4 INCH TREE WEBBING

- Strong enough for mature trees, gentle enough for young ones
- Safe and non-abrasive — won't rub or restrict growth
- Ideal for staking, securing, or protecting trees from wind and snow
- Versatile for gardening, transport, campin and more

Sizes Available: 500 Ft



### BIRD NETTING

- Durable bird netting for gardens, trees, and structures
- Prevents birds and other pests from damaging
- UV-resistant for long-lasting outdoor use
- Safe and non-harmful to birds and wildlife
- Ideal for gardens, orchards, vineyards, and ponds

izes Available: 14'x300' Roll



### BURLAP PLANT PROTECTION

- Natural burlap fabric for plant and tree protection
- Shields plants from frost, wind, and harsh sunlight
- Biodegradable and eco-friendly material
- Ideal for wrapping shrubs, covering roots, or protecting trees in winter

Sizes Available: 4x250, 6x250



### CNM200NT 12.5'X432' WOVEN FABRIC

- Provides excellent strength and durability
- Allows water penetration while preventing soil displacement
- Ideal for road construction, landscaping, and drainage applications
- Easy to install and long-lasting performance

Sizes Available: Roll



### CNM310NT 7.5'X360' NW FABRIC

- High-quality non-woven geotextile fabric
- Provides superior filtration and drainage
- Helps prevent soil erosion and separation
- Ideal for landscaping, retaining walls, and French drains

Sizes Available: Roll



### SILT SOCK

- Filters sediment from runoff
- Reduces erosion on sites
- Durable, permeable fabric
- Filled with sand or soil
- Easy to install in ditches

Sizes Available: Silt Sock 12' x 180' Pallet



### STRAW WATTLE

- Controls erosion on slopes
- Filters sediment from runoff
- Made of natural straw fiber
- Biodegradable and eco-friendly
- Easy to install along ditches
- Helps protect waterways
- Flexible for curved areas

Sizes Available: Pallet 14 Pieces 9"x25'



### TREE WATERING BAGS

- Slow-release watering for trees
- Saves water and time
- Easy to install around trunk
- Durable, weather-resistant material
- Helps trees establish roots
- Reduces soil erosion

Sizes Available: Each



### WEEDMAT

- Suppresses weed growth
- Allows water and air flow
- Durable, UV-resistant material
- Reduces maintenance
- Ideal for gardens and landscaping
- Eco-friendly and long-lasting

Sizes Available: 4'x250' & 6'x250' Roll





# RedMax<sup>®</sup>

ARRIVING MARCH 2025!!!

NEW

# THE BEST JUST GOT BETTER

THE ALL NEW REDMAX  
BCZ265TS

## WE'VE IMPROVED ON PERFECTION

With its sleek design, the BCZ265TS is a powerful 1.3 horsepower string trimmer weighing only 10.8 pounds. Its Strato-Charged engine enhances fuel efficiency and reduces emissions, providing extended runtime and a better working environment. With a 21.9 ounce fuel tank, it minimizes refills, optimizing productivity. Designed for operator comfort, it features antivibration elements on the handle and a streamlined molded body with no exposed throttle cables for enhanced durability and safety. Additionally, it boasts a market-leading 19-inch cutting diameter, making it the top choice for professional landscapers tackling larger areas.

**MORE POWERFUL,  
MORE COMFORTABLE,  
MORE EFFICIENT...  
INDUSTRY'S BEST IN CLASS!!!**

## RedMax vs. Competitors

	RedMax BCZ265TS	Stihl FS94R	Echo SRM2620T
Displacement	25.4 cc	24.1 cc	25.4 cc
Weight w/o cutting eqpt	10.8 lbs	10.1 lbs	12.5 lbs
Power output	1.34 hp	1.2 hp	N/A
Cutting diameter	19 in	16.5 in	17 in
Fuel tank volume	21.9 oz	18.3 oz	20.6 oz
Auto-return stop switch	Yes	Yes	No
Air filtration	Dual Stage	Dual stage	Dual stage
Handle grip	Rubber	Rubber	Rubber
Low Vibration	Yes	No	No
Carburetor	Butterfly (w.purge pump)	Rotary (w.purge pump)	Rotary (w.purge pump)
Bevel gear	High Torque	Std.	High Torque
OEM Cutting equipment	PT104	Autocut 25-2	Speed-Feed 400
Service interface	Yes	No	No
MSRP	\$409	\$399	\$389

ARRIVING MARCH 2025!!!

DOMINATE YOUR LANDSCAPE.

# INNOVATION FOR THE OUTDOOR TRADES



**RED LITHIUM  
FORGE**

**MOST POWER  
FASTEST CHARGING  
LONGEST LIFE**

**M18**



**FITS M18™ TOOLS**

**MX  
FUEL**



**FITS MX FUEL™ EQUIPMENT**







# BLACK DIAMOND

## Starter Lighting System

This complete landscape lighting system equips you with everything you need to illuminate landscapes with elegance and efficiency. ALL IN ONE BOX!

NOW AVAILABLE IN 3000K OR 2700K!

Black or Bronze Available! The kit includes:

- 5 Black Diamond Pathlights with lamp
- 5 Black Diamond Directional Lights with lamp
- 1 150watt transformer
- 1 Smart Socket 3.0
- 12 Lighting Shrinks



BD SLS-BLACK-3000-150  
BD SLS-BRONZE-3000-150

BD SLS-BLACK-2700-150  
BD SLS-BRONZE-2700-150

For more information on Starter Lighting System, visit:  
[brillianceled.com/black-diamond-sls](http://brillianceled.com/black-diamond-sls)

Brilliance | [brillianceled.com](http://brillianceled.com) | 800.867.2108

Follow us on social media: [brilliance.led](https://www.instagram.com/brilliance.led) Brilliance LED, LLC

A HIGHER LIGHT FORM™



12

ICE MELTER



VILLAGEOUTDOORS





### VILLAGE ICE MELT

- Sodium, Magnesium, Calcium Blend
- Dyed Blue for easy application
- Melts to -15

Sizes Available: 50#



### UREA

Sizes Available: 40 Lb



### ROCK SALT

- Large Granule
- Sodium Chloride
- Melts to -5

Sizes Available: 50#



### DOW FLAKE

- Calcium Flake
- Great for narrow walks
- Melts to -20

Sizes Available: 50#



### MAGNESIUM FLAKE

- Environmentally Friendly
- Safe For Pets
- All Natural

Sizes Available: 50#



### PELADOW

- Calcium Pellet
- Less corrosive
- Melts to -25

Sizes Available: 50#, 50# Bucket



### ECOGUARD

- Premium, eco-friendly deicer
- Works in temperatures as low as -20°F
- Four times less corrosive than standard rock salt
- Reduces bounce and scatter for precise application
- Prevents ice bonding & reduces snow hardpack
- Adds traction and improves safety on walkways
- Requires 25% less product for same results

Sizes Available: 50 Lb



**VILLAGE**OUTDOORS

# **VILLAGE ICE MELTER**

- Sodium, Magnesium, Calcium Blend
- Dyed Blue for easy application
- Melts to -15

**Sizes Available: 50#**





VILLAGEOUTDOORS

# Village Ice Melter

Ultimate  
Performance in the  
Harshest Winters

Perfect for sidewalks  
and driveways!



Village Ice Melter

50 lb  
22.7 kg

50 lb  
22.7 kg

Village Ice Melter

50 lb  
22.7 kg





VILLAGEOUTDOORS

7910

440-256-1172  
www.villageoutdoors.com  
7910 Chardon Road, Kirtland, OH 44094